

# PRODUCT DATA SHEET

202U-2522-2017-12

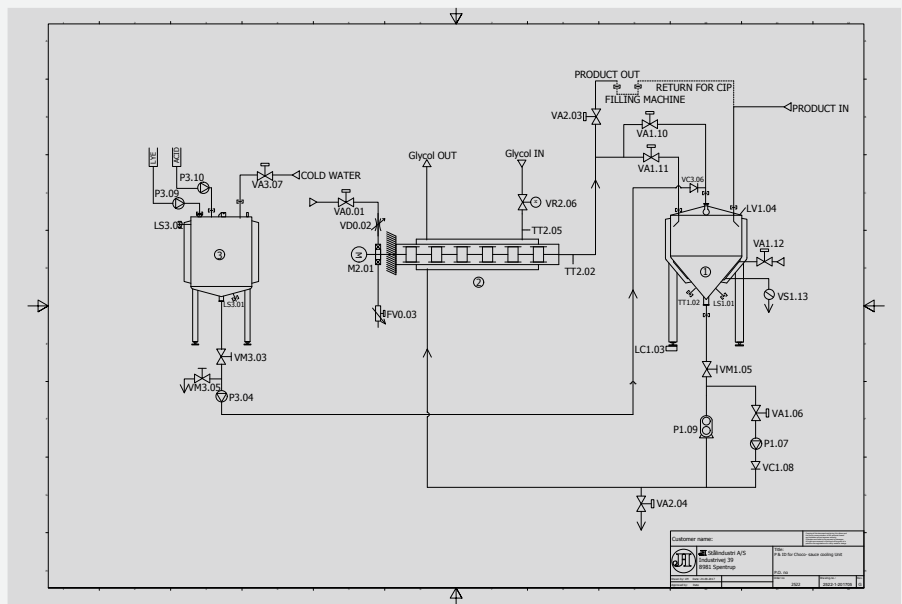


## Rotapro scraped surface heat exchanger unit

### PRODUCT DESCRIPTION

- Delivered to Norwegian food manufacturer
- Used for cooling down of:
  - Fruit juices: 750 kg/h from 82° to 30°C
  - Chocolate sauce: 500 kg/h from 90° to 35°C
  - Vanilla custard: 350 kg/h from 82° to 6°C
- JH has been responsible for the entire design including start-up and commissioning of the plant

- Delivery on a frame:
  - Rotapro SSHE: V70/125, 10 kW, 192 RPM
  - Buffer tank:  $\varnothing 1000 \times 720$ , 755 litres
  - CIP tank:  $\varnothing 500 \times 500$ , 90 litres
  - Pumps for lye and disinfectant
  - Valves: Alfa Laval and Bürker
  - Pumps: Alfa Laval and Alflow
  - Instruments: Baumer
  - Control: Siemens



Contact today – Efficiency tomorrow...



Industrivej 39  
DK - 8981 Spentrup  
jhstaal@jhstaal.dk  
T: +45 8647 9044

## JH STÅLINDUSTRI

COMPETENT AND QUALITY-CONSCIOUS SUPPLIER



Since 1990, JH Stålinindustri has been a competent and quality-conscious supplier. Human resources, high professionalism and an efficient process flow are the focal points, which ensure an end product of the highest quality.

### PRODUCT AREAS

- Pressure tanks, depressurised tanks, silo tanks from 10 litres to 250.000 litres
- Stainless steel scraped heat exchangers for heating and cooling of high-viscosity products
- Stainless multi-pipe heat exchangers
- Stainless agitators
- Mobile and stationary process units

For further information, please contact our sales department at [jhstaal@jhstaal.dk](mailto:jhstaal@jhstaal.dk) or +45 8647 9044

Contact today – Efficiency tomorrow...

[www.jhstaal.dk](http://www.jhstaal.dk)

